



MONTHLY MEMBERSHIP PROGRESS REPORT

District 201W1

Results as of: 03/31/2019

GMT: ANN ELDRIDGE

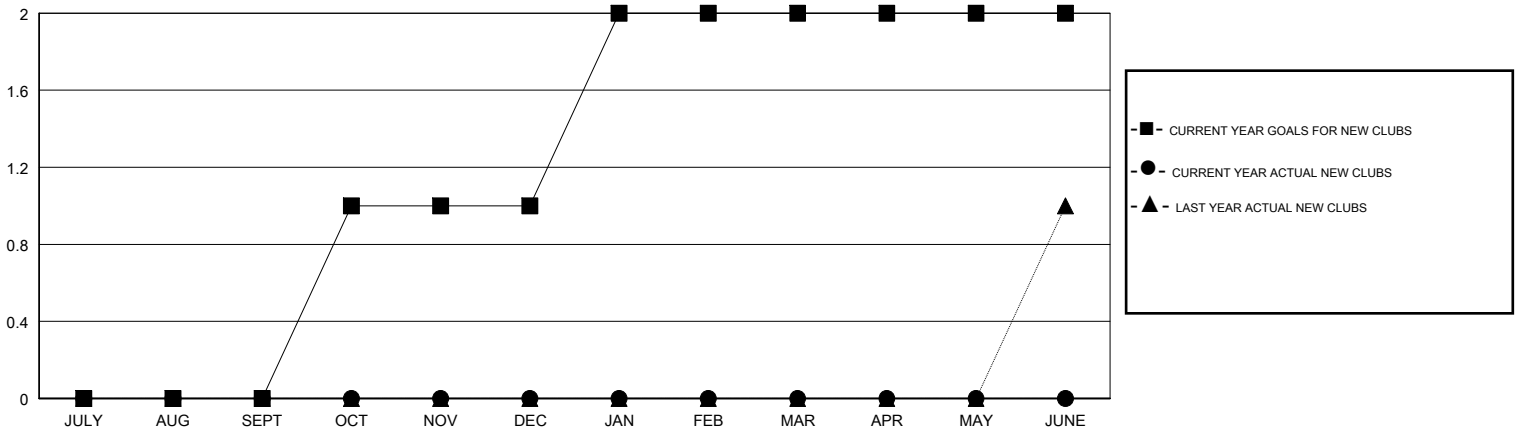
LOCATION AUSTRALIA

GMT CA

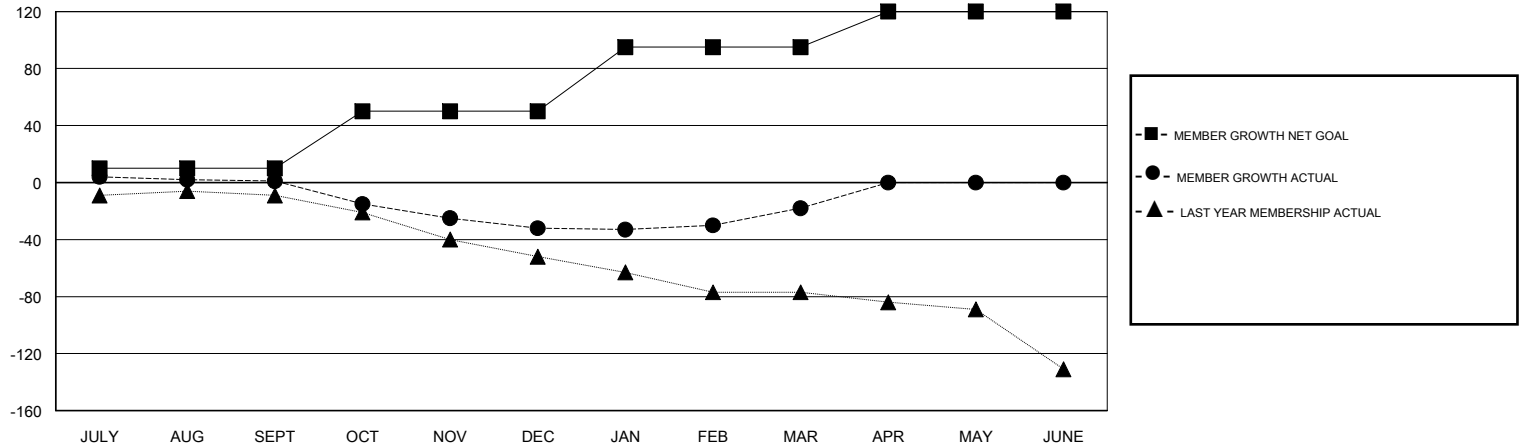
Clubs			
RESULTS FOR 2018-2019			
QUARTER	NEW CLUB GOAL	NEW CLUBS	DROPPED CLUBS
JULY/AUG/SEPT	0	0	0
OCT/NOV/DEC	1	0	0
JAN/FEB/MAR	1	0	1
APR/MAY/JUNE	0	0	0

Members			
RESULTS FOR 2018-2019			
QUARTER	MEMBER GROWTH NET GOAL	MEMBER GROWTH ACTUAL	DROPPED MEMBERS ACTUAL (including transfers)
JULY/AUG/SEPT	10	24	19
OCT/NOV/DEC	40	7	39
JAN/FEB/MAR	45	28	12
APR/MAY/JUNE	25	0	0

GOALS AND ACTUAL NEW CLUBS CUMULATIVE



GOALS AND ACTUAL MEMBERS CUMULATIVE



DROPPED CLUBS: 1	23 CLUBS OF 45 ADDED 1 OR MORE NEW MEMBERS	<u>GENDER DISTRIBUTION</u>	
DROPPED MEMBERS		MALE	398 (55.12%)
DECEASED	6	FEMALE	324 (44.88%)
CLUB CANCELLED	0	Women Percentage Fiscal Year Goal: 49%	
OTHER	64	TOTAL FAMILY UNIT MEMBERS	183
TOTAL	70	FAMILY MEMBERS PAYING HALF DUES	93

[CLICK HERE FOR CUMULATIVE MEMBERSHIP DATA](#)